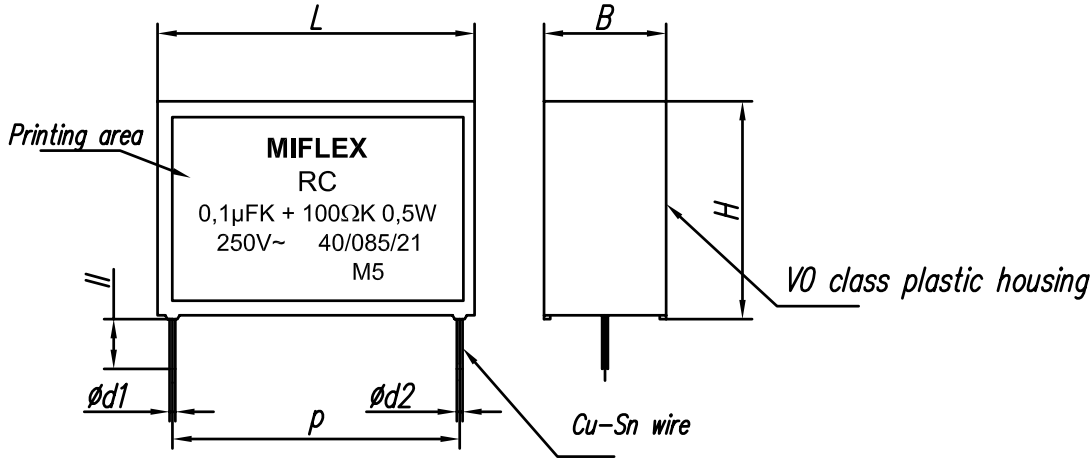
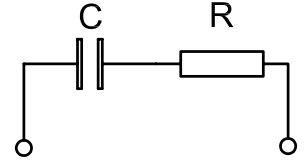


RC UNIT

Version A



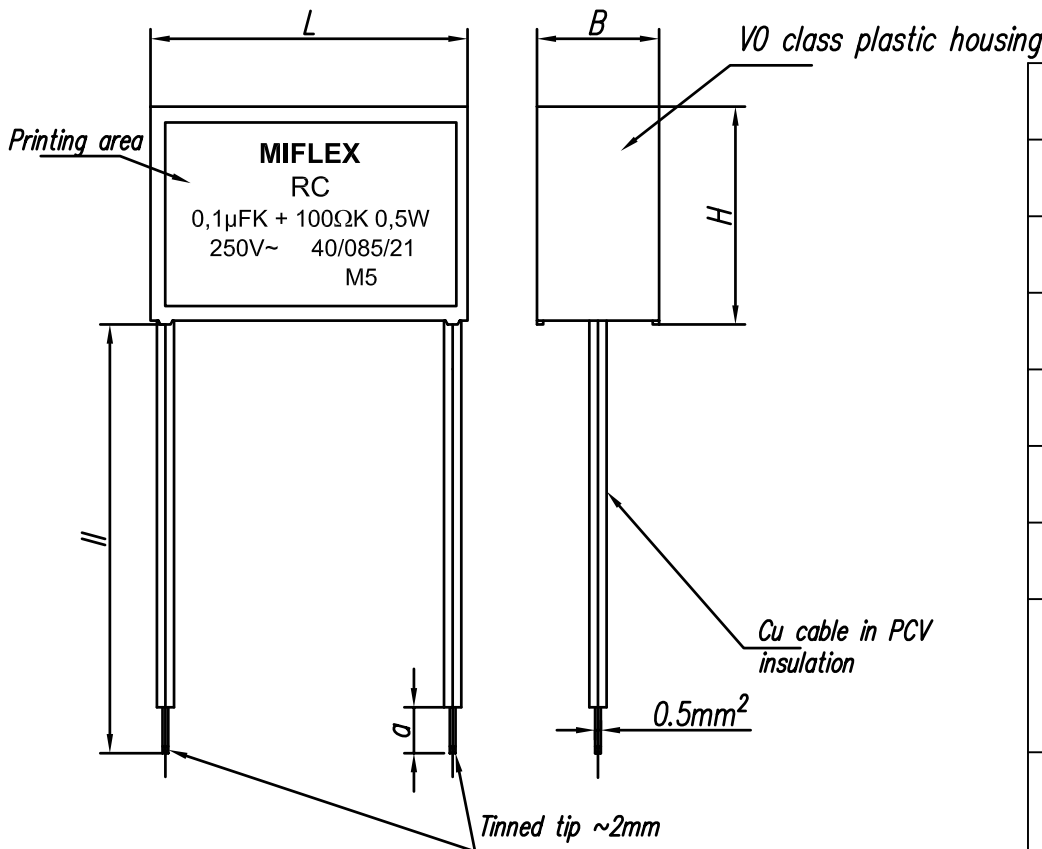
Electric schema



Example of printing

MIFLEX
RC
 $0,1\mu\text{FK} + 100\Omega\text{K } 0,5\text{W}$
 $250\text{V}\sim$ $40/085/21$
M5

Version B



TECHNICAL DATA	
Rated capacitance:	acc. to table
Capacitance tolerance:	$\pm 10\%$
Rated voltage:	acc. to table
Climatic category:	40/085/21
Discharge resistor:	acc. to table
Resistance tolerance:	$\pm 10\%$
Insulation resistance between leads	$C > 0,33\mu\text{F} - 5000\text{s}$ $C \leq 0,33\mu\text{F} - 15000\text{M}\Omega$
100% Voltage test:	1625Vdc - 1s
Standards:	WT-79/MIFLEX/RC

Description:

The RC unit is intended for suppression of electromagnetic interferences.

This product fulfils the requirements of the RoHS Directive (2011/65/EC).



ZAKŁADY PODZESPOŁÓW RADIOWYCH
99-300 KUTNO, ul. GRUNWALDZKA 3
Telefon: +48 24 355 11 00
Fax: +48 24 355 11 88
e-mail: miflexsa@miflex.com.pl

Index: V04...

Revision date
24.04.2020.

Page
1/2

RC UNIT

Version A														
C	tol C	R		Un	Dimensions				Leads					
					B	H	L	p±2	d1±0,05	d2±0,05	ll			
uF	%	Ω±10%	W	VAC	mm	mm	mm	mm	mm	mm	mm			
0,015	±10	10; 27; 47; 100; 220; 470; 1000	0,5 (0,6)	250/275	max 8,0	max 17,0	max 18,0	15,0	0,6÷0,8	0,8	min 20,0			
0,022								max 17,5				max 27	22,5	
0,033						max 9,0	max 19,0						max 27	22,5
0,047														
0,068						max 13,5	max 27,0							
0,100								max 15,5				max 28,0		
0,150					max 9,0	max 21,5	max 32		27,5					
0,220								max 11,5		max 20,5	max 32	27,5		
0,250					max 13,5	max 27,0								
0,330							max 15,5	max 28,0						
0,470					max 9,0	max 21,5			max 32	27,5				
0,500							max 11,5	max 20,5			max 32	27,5		
0,680					max 13,5	max 27,0								
1,000							max 15,5	max 28,0						

Version B												
C	tol C	R		Un	Dimensions			Leads				
					B	H	L	ll±5	a+2			
uF	%	Ω±10%	W	VAC	mm	mm	mm	mm	mm			
0,015	±10	10; 27; 47; 100; 220; 470; 1000	0,5 (0,6)	250/275	max 8,0	max17	max18	35	6			
0,022										max17,5	max 27	
0,033						max 9,0	max 21,5					max 32,0
0,047												
0,068						max 13,5	max 27,0					
0,100										max 15,5	max 28,0	
0,150					max 9,0	max 21,5	max 32,0					
0,220								max 11,5	max 20,5			
0,250					max 13,5	max 27,0						
0,330							max 15,5	max 28,0				
0,470					max 9,0	max 21,5			max 32,0			
0,500							max 11,5	max 20,5				
0,680					max 13,5	max 27,0						
1,000							max 15,5	max 28,0				

Other lengths of leads available after arrangements with producer.



ZAKŁADY PODZESPOŁÓW RADIOWYCH
99-300 KUTNO, ul. GRUNWALDZKA 3
Telefon: +48 24 355 11 00
Fax: +48 24 355 11 88
e-mail: miflexsa@miflex.com.pl

Index: V04...

Revision date
24.04.2020.

Page
2/2